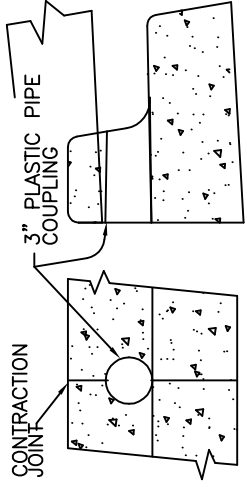
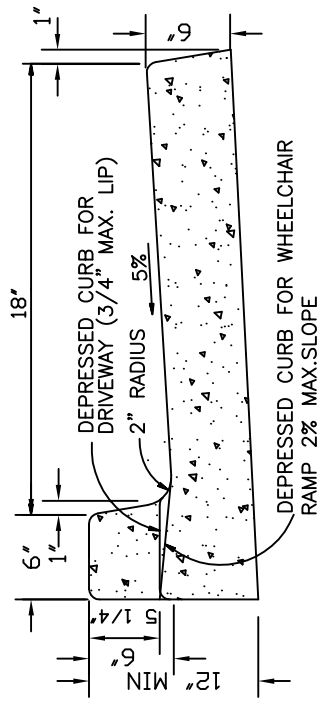
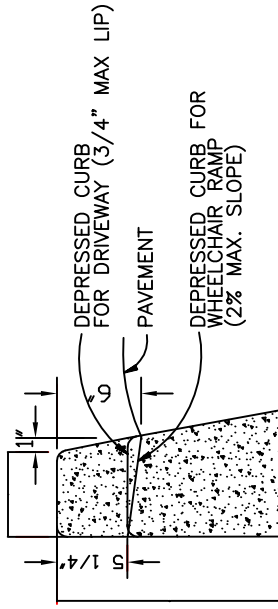


# STANDARD CURB



WEEP HOLE THROUGH CURB

# O.D.O.T. TYPE "C" CURB



USED ONLY WITHIN STATE HIGHWAY RIGHT OF WAY

**NOTES:**

1. ALL RADII SHALL BE 3/4" EXCEPT AS OTHERWISE SHOWN.
2. ISOLATION JOINTS SHALL BE PLACED ONLY AS SPECIFIED.
3. CONTRACTION JOINTS SHALL BE PLACED AT 15' INTERVALS AND SHALL EXTEND AT LEAST 50% THROUGH THE CURB OR CURB AND GUTTER.
4. A CONTRACTION JOINT SHALL BE PLACED ALONG AND OVER WEEP HOLE THROUGH THE CURB AND THROUGH THE SIDEWALK.
5. WHEN SIDEWALKS ARE CONSTRUCTED, EXTEND 3" PIPE TO BACK OF SIDEWALK AND INSTALL COUPLING.

NOTE: All material and workmanship shall be in accordance with the current Oregon Standard Specifications

OREGON STANDARD DRAWINGS  
**CITY OF HOOD RIVER  
 STANDARD CURB DETAIL**

DATE	2002
REVISIONS	
DESCRIPTION	
	City of Hood River/Modifications

The selection and use of this Standard Drawing, while designed in accordance with generally accepted engineering principles and practices, is the sole responsibility of the user and should not be used without consulting a Registered Professional Engineer.