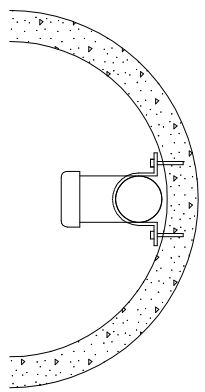


SECTION A-A
CLAMP DETAIL



- NOTE:
1. Inside drop manholes are allowed only with prior approval.
 2. Only one inside drop per 48" manhole.
 3. PVC shall be ASTM D3034 SDR35

<p>NOTE: All material and workmanship shall be in accordance with the current Oregon Standard Specifications</p>	
<p>OREGON STANDARD DRAWINGS CITY OF HOOD RIVER SANITARY SEWER INSIDE DROP MANHOLE</p>	
DATE	REVISIONS
12-06	2002
<p>City of Hood River Modifications</p>	

The selection and use of this Standard Drawing, while designed in accordance with generally accepted engineering principles and practices, is the sole responsibility of the user and should not be used without consulting a Registered Professional Engineer.