



**HELPFUL LINKS:**

- [www.clearinghouse.adhl.org](http://www.clearinghouse.adhl.org)
- [www.stopdrugs.org](http://www.stopdrugs.org)
- [www.mfiles.org](http://www.mfiles.org)
- [www.methresources.org](http://www.methresources.org)
- [www.theantidrug.com](http://www.theantidrug.com)
- [www.streetdrugs.org](http://www.streetdrugs.org)
- [www.drugstory.org](http://www.drugstory.org)
- [www.mamasite.net](http://www.mamasite.net)
- [www.nida.nih.gov](http://www.nida.nih.gov)
- [www.montanameth.org](http://www.montanameth.org)
- [www.justthinktwice.com](http://www.justthinktwice.com)
- [www.drugfree.org](http://www.drugfree.org)
- [www.youthmethsummit.com](http://www.youthmethsummit.com)
- [www.atg.wa.gov](http://www.atg.wa.gov)
- [www.dshs.wa.gov/dasa/services/certification/GB.shtml](http://www.dshs.wa.gov/dasa/services/certification/GB.shtml)

**SNOHOMISH COUNTY RESOURCES**

**Emergency Services ..... 911**  
(Fire, Aid, Sheriff's Office, Police)

**Animal Complaints.....425-388-3440**  
or your City Animal Control

**Child Protective Services....1-866-280-6714**

**Federal Trade Commission: ID Theft**  
1-877-438-4338, [www.consumer.gov/idtheft](http://www.consumer.gov/idtheft)

**Garbage or Septic Complaints ...425-339-5250**  
(Sno. Health Dist. Environmental Health)

**Island Crossing Counseling Services**  
360-652-9640

**Snohomish County Code Enforcement**  
Junk/junk vehicles/bldg. violations.....or  
your City Code Enforcement  
425-388-3311 (ask for Code Enforcement)

**Snohomish County Alcohol/Drug Treatment**  
Info Line.....425-388-7473

**Snohomish Regional Drug Task Force**  
Tip Line ..... 425-388-3479  
Public Website ..... [www.srdtf.org](http://www.srdtf.org)

**Stillaguamish Tribal Police...360-474-9111**

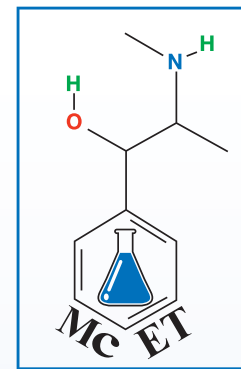
**Tulalip Tribes.....800-869-8287**

Helpful Facts About

**METHAMPHETAMINE**

By Snohomish Regional Drug Task Force

**METH CRIMES ENFORCEMENT TEAM**



**"TAKE BACK YOUR COMMUNITY"**



[www.srdtf.org](http://www.srdtf.org)

## WHAT IS METH?

Methamphetamine, CSA Schedule II, is a potent central nervous system stimulant. Meth is smoked, snorted, injected or administered orally. Users refer to meth as “crank,” “speed,” “crystal” and “ice.” Signs of meth use include dilated pupils, sweating, dry mouth, flushed skin and tremors.

Methamphetamine users may also exhibit aggressive and psychotic behavior, irritability, anxiety, paranoia, and auditory hallucinations. There are also limitless long-term effects attributed to methamphetamine use including cardiac and neurological damage.

## WHAT DOES METH LOOK LIKE?

- Finely shaved pieces of glass
- Chips or slivers of ice
- Rock salt
- Powder meth looks like off-white powder
- May come in tablet form

## HOW IS METH TAKEN?

- Smoking
- Injecting
- Snorting
- Oral Ingestion



Same person, chronic METH user

## EFFECTS OF METH USE:

- Paranoia
- Hallucinations
- Decreased social life
- Severe depression
- Memory loss
- Dramatic mood swings
- Acne, sores
- Dilated pupils
- Flushed skin
- Tremors
- Aggressive behavior
- Panic attacks
- Extreme weight loss
- Loss of pleasure
- Hyperactive behavior
- Sleep deprivation
- Impaired judgment
- DEATH

## ACTIVITIES OR SIGNS OF A SUSPECTED DRUG HOUSE:

- Frequent visitors at all times of the day or night
- Late night activity
- Paranoid or odd behavior or extensive security
- Occupants appear unemployed, yet seem to have plenty of money and pay bills with cash
- Windows blackened or curtains drawn
- Chemical odors coming from the house, garbage or detached garage
- Neighbors engaged in unusual activities including disassembling cars or appliances for no apparent reason

Any single activity may or may not be sole proof that drug dealing is occurring. A combination of the above may be a reason for concern.

**If you suspect illegal drug activity contact the Snohomish Regional Drug Task Force**

**website: [www.srdtf.org](http://www.srdtf.org)  
or tipline: 425-388-3479**

**“Take back your community”**