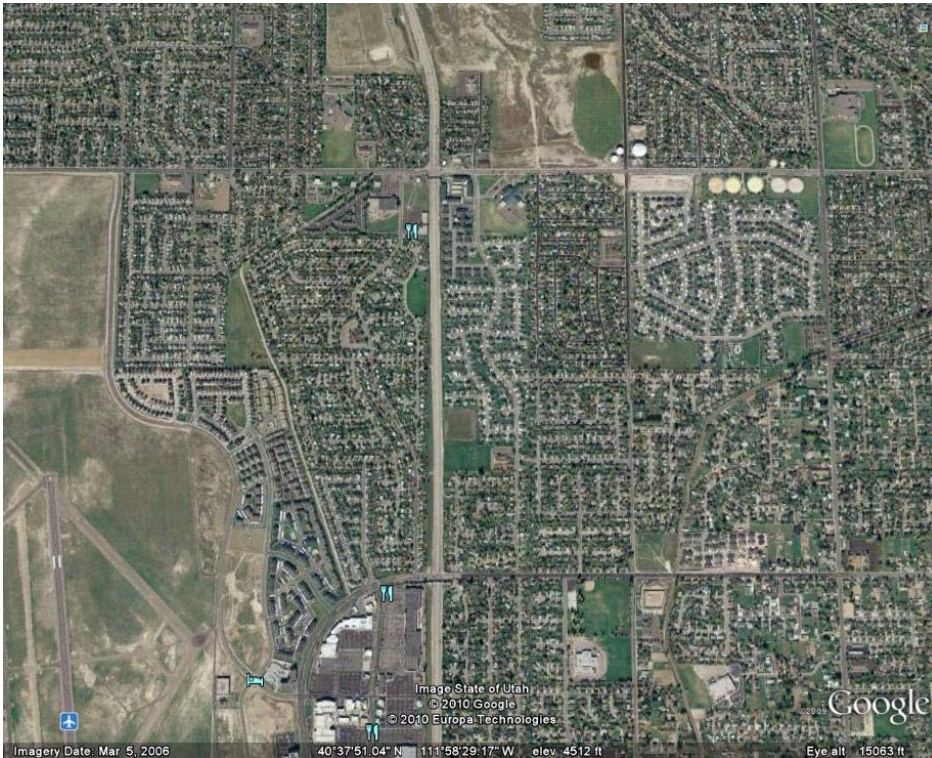




# Bangerter South Project

Construction at 6200 S.; 7000 S. and 7800 South

[www.hardhatclub.info](http://www.hardhatclub.info)



## ChamberWest

*The Village at River's Edge*

1241 W. Village Main Dr., Ste. B

West Valley City, Utah 84118

801-977-8755

801-977-8FAX (8329)

[www.chamberwest.org](http://www.chamberwest.org)

[www.hardhatclub.info](http://www.hardhatclub.info)

### OPEN HOUSE:

**When: June 30—4:30 to 7:00**

**Where: Oquirrh Elementary—7165  
Paddington Road, West Jordan**

[www.udot.utah.gov/bangertersouth](http://www.udot.utah.gov/bangertersouth)

[bangertersouth@utahgov](mailto:bangertersouth@utahgov)

As our communities continue to grow and develop, traffic congestion along Bangerter Highway and its east-west connections is increasing. The Utah Department of Transportation (UDOT) is committed to identifying and implementing solutions to improve mobility in this important corridor.

Several intersection improvement projects are already underway, and UDOT is researching additional solutions. The State Legislature recently allocated funds for more improvements to Bangerter Highway in the cities of Taylorsville and West Jordan.

UDOT has initiated an environmental study to evaluate the feasibility of building a grade-separated interchange at 7800 South and Continuous Flow Intersections (CFI) at 7000 South and 6200 South.

The study will evaluate transportation needs and assess how construction of proposed improvements could affect the natural and human environment, including impacts to wetlands, noise, air, quality, historic properties, land use, private property and socio-economics.

Public input is important to understanding these issues and evaluating proposals. The study team would like to know what issues and resources in your community are important to you.

The study team has created this website as a resource for you to learn more about the environmental study. After reviewing the web pages, please let us know if you have any questions feedback regarding the study.