

If you have trouble reading this email, click [here](#)



[SHOP DWR](#)

[DESIGN NOTES BLOG](#)

[EMAIL SIGN UP](#)

[FORWARD TO A FRIEND](#)

JULY 23, 2010

DWR Design Gallery Contest And the winners are...

We were overwhelmed by the response to our DWR Design Gallery contest and we're very excited to show you the winners. A panel of judges rated each entry on a scale from 1 to 10 in each of the following criteria: innovation, honesty, timelessness and approachability. The four with the highest scores were our winners. Congratulations and thank you to everyone who entered.

FIRST PLACE

Russell Hill Road Residence, Toronto, Ontario, Canada
Designed by **gh3 - Pat Hanson (Partner in Charge) and Anthony Provenzano (Project Architect)**

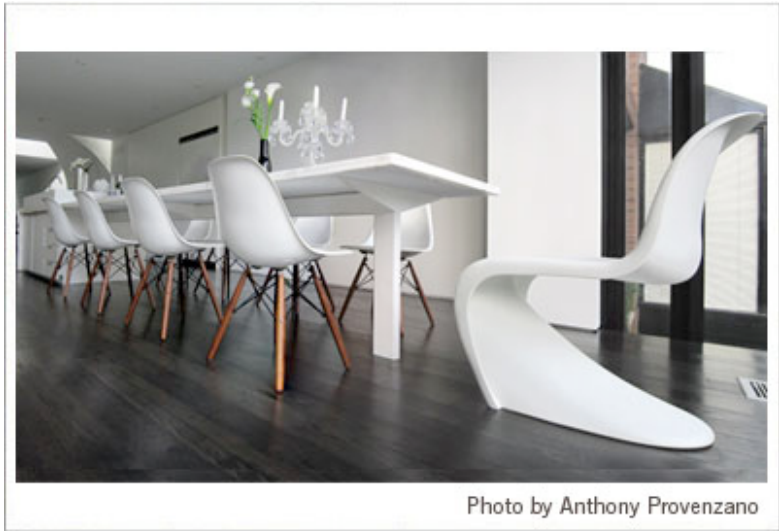


Photo by Anthony Provenzano

Built in the Brutalist style of architecture of the 1970's, the house had been changed over the years by previous owners who converted large open spaces into cellular rooms. Hanson and Provenzano reversed this by reopening the ground floor so that it became an open loft-like space from front to back (the house is about 70' long). They also stripped back the interior to create a neutral shell punctuated by sculptural elements like a curved stair and stone fireplace wall.

"I believe in optimism and plenty of white paint."

— ELSIE DE WOLFE



FIND YOUR GROOVE WITH MOUILLE'S MOVES

Serge Mouille's lamps (1952–1958) have an engaging, sculptural aesthetic and graceful form with arms that can be rotated. Made from the original molds; each piece is stamped and numbered.

[> See the Serge Mouille Collection](#)



Interior finishes were chosen for their neutrality. Most surfaces were painted white and other surfaces that would incur more wear – like bathtubs and counters – were finished with custom fabricated white Corian. All floor surfaces, including the stairs are wood, stained nearly black. The contrast with the walls also serves to extend and unify the space.

SECOND PLACE

Vinto Restaurant (vinto.com) 418 E. 200 South, Salt Lake City, UT
Designed by David Harries and Louis Ulrich, principal Lu’na Design Studio



David Harries immediately saw the potential in this old building to house a casual, modern Italian food concept. Working once again with Louis Ulrich, AIA, the first goal was to create a feeling of simplicity. The narrowing of the restaurant allowed for visual variety and booth design, but also pulled the eye to the back of the space; the choice to use the Random Light by Bertjan Pot, reinforced this visual goal while maintaining the airy view to the back.

Because of the exposed ceiling joists, they explored industrial finishes, with the end result being exposed metal, wood, marble, and cork. The industrial-chic, Icon Chair and Barstool by Philippe Starck, and the 20-06 Counter Stool by Foster & Partners provided added enhancement. This seating choice provided simplicity and comfort, while the open back maintained visual openness.

THIRD PLACE

McGuire Warman Residence, Ludlow, Kentucky
Designed by Carey McGuire Warman

CLEAN UP AT BATH CLEARANCE

Further reductions have been taken on bath fixtures, storage and accessories. Save 70% or more on select items.

[> Shop all Bath Clearance](#)



TIMELESS FROM ANY ANGLE

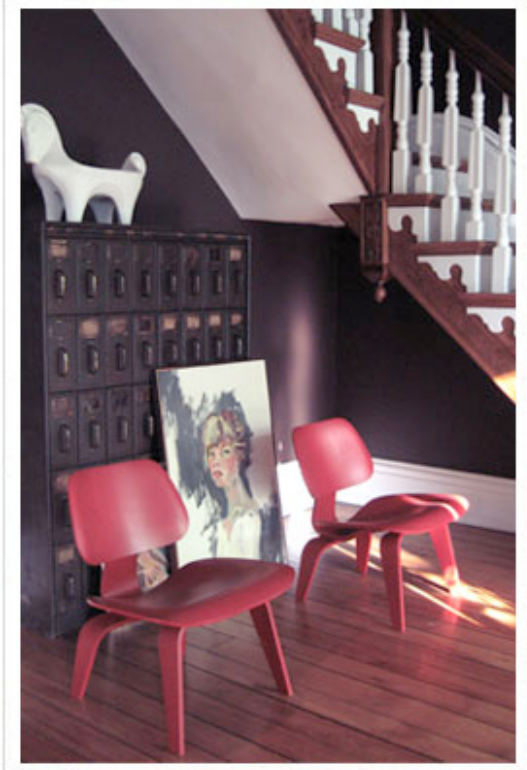
“A chair is not just a product of decorative art in a space,” wrote Finn Juhl, “it is a form and a space in itself.” Beautifully demonstrating this idea is his Pelican Chair (1940), with its graceful curves that befriend the body and wrap the sitter in its embrace.

[> See the Pelican Chair](#)



DIVE INTO OUTDOOR CLEARANCE

Fantastic discounts on in-stock outdoor furniture and accessories – everything you



Carey McGuire Warman's philosophy is that if you design with things you love, they will always work. The trick is, you just have to be really picky about what you choose to love. With that in mind, the design challenge she had with her 120-year-old house was how to blend two long rooms split by pocket doors into one cohesive living room. And since she was her own client and her own design team, she had to figure it out herself. This is a designer who loves to blend modern design with vintage and antique pieces, and creating striking contrast between the two. So, seeing as the house already brought a lot of vintage character to the space, she looked to some modern pieces for inspiration.

FOURTH PLACE

Satzger Residence, Menlo Park, CA
 Designed By Douglas Lorie Design

accessories - everything you need for chilling out in your toasty outdoor space.

> [Shop all Outdoor Clearance](#)



SLEEK TEAK

Danish designer Jens Quistgaard, whose immensely popular Dansk tableware pieces helped define Scandinavian modern in postwar America, designed the Fiona Teak Tray, which can be used indoors or out.

> [See the Fiona Teak Tray](#)

STUDIO EVENTS

[Milwaukee-based Misewell Design](#)
 7.23.10-7.24.10
 Location: [Milwaukee](#)

See what the 2009 ICFF Best New Designers are up to. Founding brothers Vincent and Paul Georgeson of Milwaukee-based furniture design and manufacturing company Misewell will discuss their current product lineup.



Husband and wife design team Doug and Lorie Satzger took a simple approach to designing their home. They selected pure designs for simple design for everyday indoor-outdoor living.

Congratulations to our winners and check out blog.dwr.com for honorable mentions.

-DWR

Continue the conversation and learn more about design at the [Design Notes blog](#).

Prototypes will be on display for a glimpse into the Misewell design process, as well as the exclusive unveiling of some new products.

Silicon Valley Modern's Heather David
7.24.10
Location: [San Francisco - Fillmore](#)

Local author and design historian Heather David of Silicon Valley Modern (www.svmodern.com) will discuss and show examples of mid-century modern design and architecture in the Bay Area, and sign copies of her new book, "Mid-Century by the Bay." The book portrays the Bay Area during its years of transition from the post WWII-era to an emerging center of technology.

A Mad Men Happy Hour and Sweepstakes
7.29.10
Location: [San Francisco - Portrero](#)

AMC and Design Within Reach have teamed up to give one lucky winner all the furniture to *Mad Men* their living room, including our Raleigh Collection. Enter the sweepstakes at the Studio or dwr.com/madmen, then stay for gimlets, old fashioned and tom collins at our happy hour. The best-dressed Mad Man or Smart Woman will win vintage mid-century pottery and glassware prizes.

> [See all DWR Studio Events](#)



WWW.DWR.COM

SHARE THIS EMAIL: [f](#) [g+](#) [t](#) [v](#)

If bdharries@msn.com should not be subscribed or if you need to change your subscription information for Design Within Reach, [please use this preferences page](#).